

Unlabeled!

An exploration of the boxes you
put yourself in

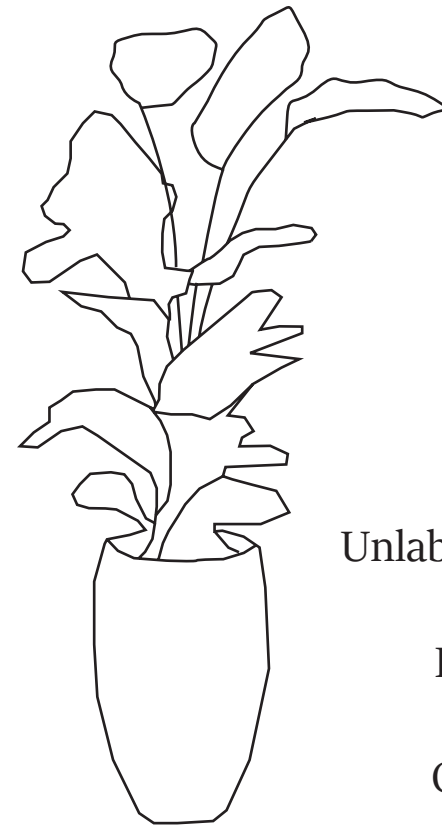
Studio Studio's Magazine



How do you keep up with these Kombucha Hipsters



At sea it must be hard to keep track of trend after Trend, but we can bring the pop culture to you! This new veggie bike is both eco friendly and edible! Eat your way to clean sustainability with the veggie bike!



Unlabelled:
Aslan Campbell

Unlabelled what does that mean?
What does it bring?
Does it bring freedom?
To do what we want?
Or is it a bottomless pit
Nothingness.

Driving down an unmarked highway in the middle of the night with
your headlights out.

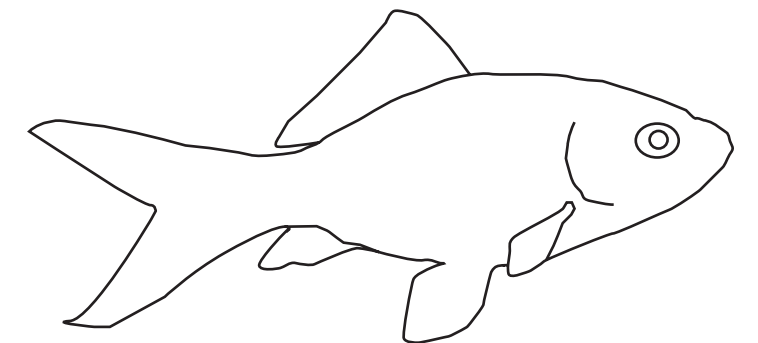
It is unidentified
Unclear.

To some a nightmare to others
Limitless opportunities.
Uncaged and given to interpretation
There are no barriers or guidelines.

Unlabelled is peace of mind.

Is an unmarked carton of milk bad or is it whatever you choose it to be.

Unlabelled is free will it is unchecked and genuine.



DICHOTOMY

CONCRETE



Juxtaposition

by Danae



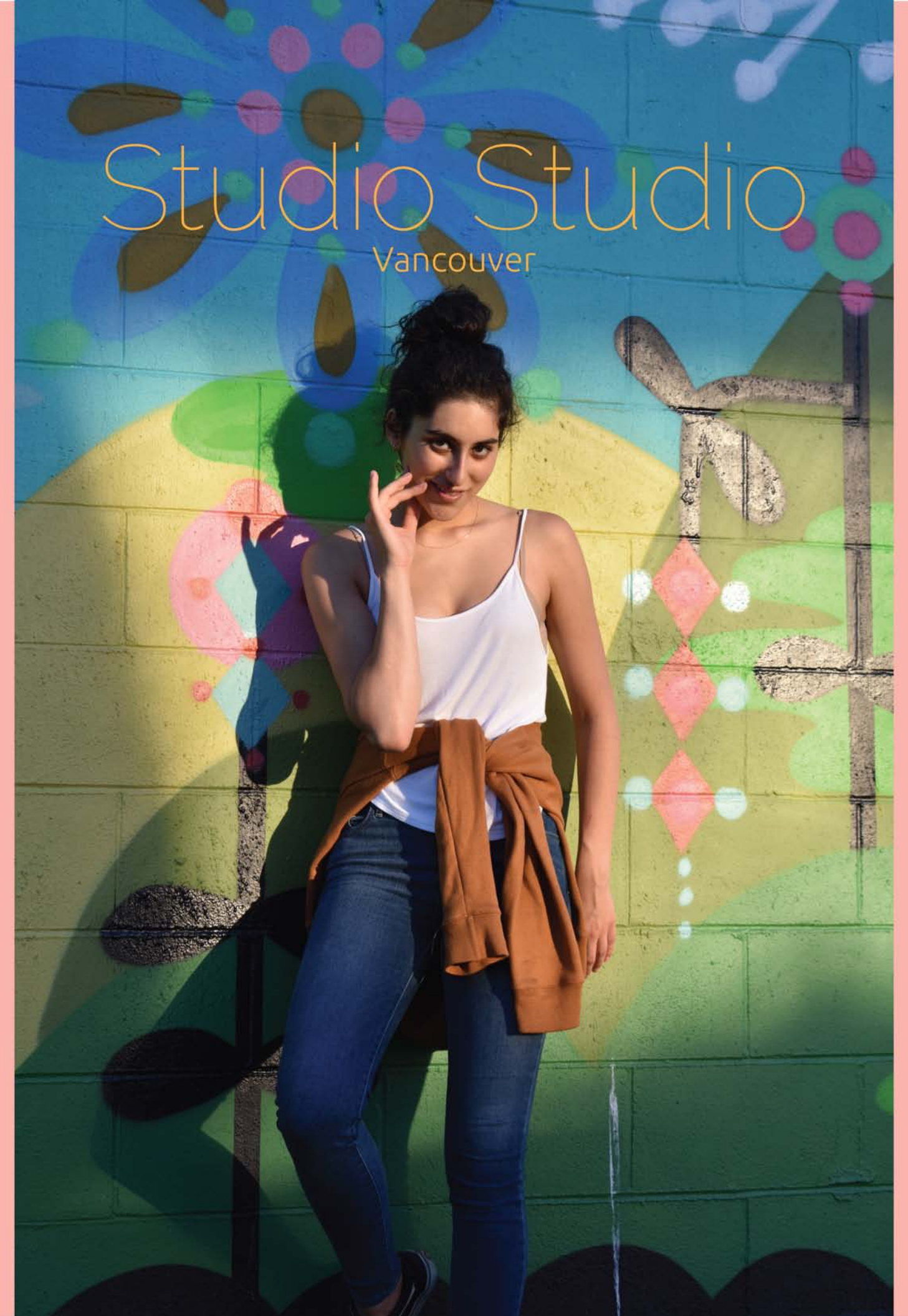


Afterimage



Interior Design: The Studio Studio Way

DM us @studio_studios_studio on
Instagram to arrange a consultation.





YSSS

Yves Saint Studio Studio

Winter, 2020

Purse.

by Morgan.





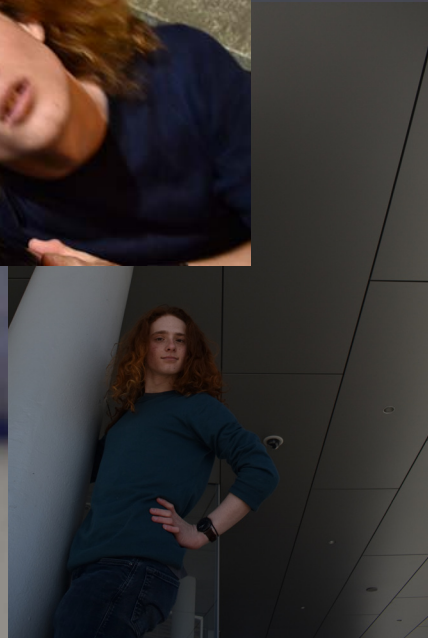
Morgan Abele

Wild Times

As heard in:
Oleander of June Season 1

raphael gutteridge

vancouver - toronto





Fashion
Implies
DANGER



And that's a risk we are willing to take.



Is
Literature
a
Gateway
to
Communism
?

Danae Biln

In our everchanging society if societal classifications.
We come to question the origins of these labels too
vague? Good.

Human beings have evolved and with that, so
has their obsessive need or labels. This is why vague
sentences such as the one above affected you. That feeling
of discomfort, that visceral reaction...what were you
reacting to?

Literature.

Literature is the social construct that constructs society and because it seems that ours is heading in a “leftist” direction (as “Boomer” would say) our trajectory... communism.

If literature constructs society then literature is our gateway to communism. Just as we now view everything on a spectrum, literature has aided y sub creating the labels on that spectrum. With everything labeled comes fluidity. Fluidity breeds expression, we share when we express a society that shares is a society of emotional communism.

And this is just one of the infinite ways that literature has provided a gateway to communism.



Redefine Definitions

Studio Studio

Vancouver

Toronto

**Studio Studio
Unlabeled**

We might not like labels, but Vancouver is one of ours

Studio

Studio

Vancouver



the stars have meaning

do you?



Innovation.

Since 2018, the artists at Studio Studio have been working to bring you revolutionary designs. Shown here, the *Rocket* uses recycled watch parts as a way to both reduce metal waste and bring machined beauty to your home.

IG: @studio_studios_studio

Aries -eager, dynamic, quick, competitive

Allow them into your emotional vault. You're feeling particularly stuck right now. The moon is not in your favour. Prepare for a loss. time for celebration! Eat some cake!

Taurus - strong, dependable, sensual, creative

You have a need for a human. Someone to host. Feed that need and explore what comes of it! Time to enjoy being a human being. Life on earth can feel foreign. Feeling grass between your toes will provide you with the serotonin you will desperately need to get through the week ahead.

Gemini -versatile, expressive, curious, kind

Ready to relive your childhood? Dance! Sing! Its time to rejoice! You will be presented with a life-changing decision tomorrow between 6:45 and 11:59. Choose wisely. Open your doors to a stranger and exercise the benefits. Welcome them into your bed if you must. Enjoy human connection. this month is for you!

Cancer -intuitive, sentimental, compassionate, protective

Now is the time for passion. Are you hiding? Think about what you're really feeling and decide if you have reflected this in your actions lately. You may be disappointed. You are currently keeping something hidden because you fear it will be damaged. Damage it!

Leo -dramatic, outgoing, fiery, and self-assured

There are big sexual changes in your life. Maybe with a special someone or something. explore those urges! Venus is in orbit with the sun right now -you are ready to be reborn into your full form. Eat only liquids for the next week. Change is afoot. You have chemistry with a taurus in your life. Explore this.

Virgo -practical, loyal, gentle, analytical

Creating a self-made career can be challenging. Think about your next move and how you can express that in the world... and the bedroom ;) you're ready to be seen.

Libra -social, fair-minded, diplomatic, gracious

He's not a toy. Don't play with him. You have strengths in arithmetic. Exercise this with your job and relationships. Jupiter is honest and holding you accountable so be ready to have pressures with family and money.

Scorpio -passionate, stubborn, resourceful, brave

Your life is shit but you're ready for more! You are stubborn, brave and resourceful so use what you have and turn straw into gold. Be wary of a Capricorn who may attempt to poison you or someone you hold dear.

Sagittarius -extroverted, optimistic, funny, generous

Learn guitar! Explore your sexuality and see what you find! August is ending, and with that, the box you put yourself in all those years. Enjoy colour! Wear something blue and unpack that side of you.

Capricorn -serious, independent, disciplined, tenacious

GET A TATTOO! You're a person of structure. This world will kill you if you dont abolish that need. Having a foot in both waters is going to serve you in these next few months. You are sheltering yourself from what your body wants. Mercury is influencing your decisions. Its time to cleanse.

Aquarius -deep, imaginative, original, uncompromising

Create your reality. The season is for you. When you start feeling something is wrong, go against your instincts and go towards it! Walk down that sketchy street, eat the food that smells weird, talk to that stranger on the bus. Enjoy what comes of it.

Pisces -affectionate, empathetic, wise, artistic

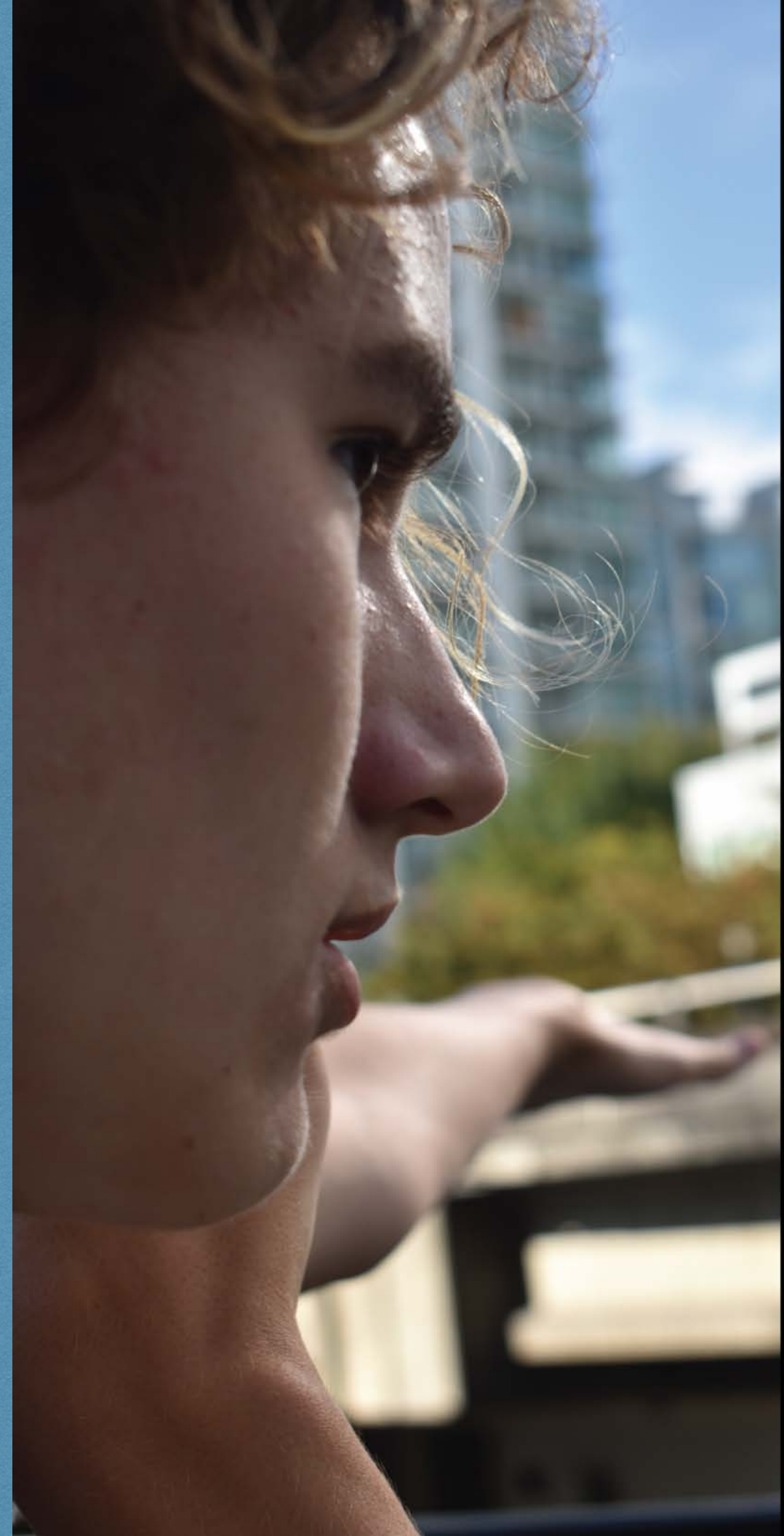
You are feeling the wisdom of your past lives and you are applying it to all aspects of your life. Prepare for tears. You are one to cry at the smallest inconvenience.

Horoscopes by Danae Biln

BE BOLD...

BE BRAVE...

IN YOUR DESIGNS



Look Towards Kombucha Hipsters

Do you look towards something beyond you? Have you been stuck in the Indian Ocean? Do you envy Avicci? Gucci? Suchi? Vegan? Well, then look no further than Studio Studio. With Studio Studio you can be in the beyond you always hoped for from the middle of the Indian Ocean.



Studio Studio: Bringing you fearless fashion since 2002

@studio_studios_studio



Studio Studio

@studio_studios_studio



Studio Studio



Unlabeled

vancouver o toronto o kitsilano o bay street corridor

@studio_studios_studio



@danaebilin

Style. Geometry. Studio. Studio

CROSSROADS CROSSROADS UNLABELED: CROSSROADS CROSSROADS

Raphael Gutteridge

Vancouver, for all intents and purposes, is a city on two axes. Running from north to south is the Canada Line, a train connecting the downtown core to its airport and outlying settlements. Juxtaposed with that is the Broadway corridor, the busiest bus corridor in the city, running from the very edge of the municipality through varying neighbourhoods, all the way to the city's primary university. They intersect at Broadway and Cambie Street, two vital lifelines to this city's survival.

For such an important intersection, it is curiously devoid of life. There are no tall skyscrapers or magnificent features. The art-deco inspired City Hall lies three blocks to the south, barely a presence where these streets meet. Vancouver General Hospital is separated from the intersection by modest, unassuming buildings. The intersection is allowed to stay as it is: an intersection. Only the entrance to the Canada Line station there gives any hint at its importance over other crossroads.

The junction of Broadway and Cambie is unlabeled, unforced to be anything more than just an intersection between two lines. But maybe that's about to change.

As of August, 2020, in the throes of a global pandemic, new life is being born into the intersection. Two new projects promise to bring change to the area. One is the nearly three billion dollar Broadway subway extension, a force that has altered bus lines and commutes for tens of thousands, and will drastically alter the way Broadway functions. The other is much more modest and unassuming by comparison. A new building is coming to the intersection, opposite from the Canada Line station. Both are about to make this crossroads completely different.

510 West Broadway's impact may have already come to pass. In order to build the new, relatively ordinary multi-story building a demolition was required. This demolition removed several businesses from the area. With the rezoning of the Broadway Corridor preparing to completely alter the face of the city, this is going to be the new normal for the city. Small business and large businesses, taquerias and Starbucks are soon going to be torn down for new, bland buildings like on Cambie Street.

Its replacement is bland in inoffensive in design, just another glass cube that reads as any other new building in the city. At the time of the Olympics, the last period of major growth and expansion, this may have been something noteworthy. Now, when the False Creek Flats are about to be alive with LEED Platinum Lululemon headquarters, this is nothing architecturally.

However, it's still something to pay attention to. It's a story that's going to repeat itself all the way to UBC.

The Broadway extension of the Millennium Line is going to cause an impact even more existential than just one building. In fact, the extension is why 510 West Broadway is something to look at.

The 99-UBC B-Line is the busiest bus route on the North American continent. It runs from the early morning to about 2AM at a peak frequency of 3-5 minutes. Translink, the transit agency for the Vancouver area, says it cannot put any more buses on the route. With the population of

Vancouver only expanding, the capacity on the route requires expansion.

So it's being expanded.

Billions of dollars have been committed by the City of Vancouver, Translink, the Province of British Columbia, and the federal government of Canada. The extension will go from the current terminus near Emily Carr University all the way to the intersection at Broadway and Arbutus in Kitsilano.

A knee-jerk reaction of the Vancouverite may be to deride the short length of this extension, especially when the 99 B-Line goes all the way to UBC, whose students demand a lot of capacity. This reaction is not without its merit. With the university having so much demand on transit, it bears questioning why the line doesn't go all the way (the answer to which is extreme cost). But the Vancouverite that casts doubt on the project should give Translink a little more credit.

While these Vancouverites should still pressure for the completion of the project (which still claims to one day reach UBC in a hypothetical second phase), they can rest easy knowing that billions of dollars aren't being committed to nothing, especially with the rezoning of the Broadway Corridor.

Vancouver is growing. That's an undeniable fact. As a major corridor in the city, Broadway is growing as fast as anywhere else. The rezoning of the area is preparing it to meet the housing demands that will be placed on it. These people will need to commute, and the B-line won't be enough for that.

On the corner of Granville and Broadway, a new office tower is going up. It is certainly going to be joined by others now that the area is being rezoned. The strain of commuters would break the B-Line, but not the higher capacity of the subway.

This intersection at Broadway and Cambie is visually somewhat bland, and may stay that way for a while, but its invisible qualities are emblematic of something greater for Vancouver. Its importance is unlabeled but very, very real.

And as for the strain of UBC commuters, if they follow the Broadway Corridor to get to school, they'll still need to transfer at Arbutus to the same old bus they always have. Fortunately this bus isn't their only option. While a number of other buses have always served the university (like the 4, 84, 14, and 9), the 99 has so far been the only articulated express bus with frequent service.

That changed on January 1st, 2020. Translink announced their new Rapid-buses, green express buses. These 60 foot, articulated, NewFlyer buses jump between electronic departure boards (a rare sight in Vancouver), and even occasionally get to take advantage of express lanes. One of these is the R4-41st Avenue Rapidbus.

This bus goes from Joyce-Collingwood on the Expo Line to the bus loop in UBC. It passes by the Oakridge Canada Line Station (on Cambie Street), allowing another connection for suburban commuters. Before the R4, the only frequent and reliable bus to get them the last few kilometers from the skytrain was the 99. By adding the R4, pressure can be relieved from the 99.



Unlabeled

Vancouver, Toronto, Kitsilano, Bay Street Corridor



Are you vibrant?

Are you vivacious?

Are you vital?

Are you Studio Studio?

@studio_studios_studio



@danaebiln

Danae Biln by Danae Biln

Question what it means to be: Unlabeled

